



## Department of Energy, Environment and Climate Action

Date: 24 June 2025

To the Landholder or Occupier,

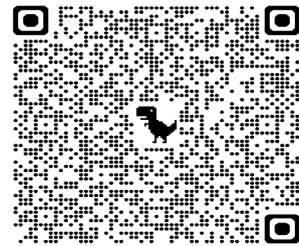
### NOTIFICATION OF 1080 PEST ANIMAL BAITING PROGRAM

The Department of Energy, Environment, and Climate Action (DEECA) will be undertaking a 1080 pest animal poisoning program using buried baits and canid pest ejectors on public land to manage predation on livestock.

Baiting will occur from the 1 July 2025 to the 1 January 2026.

See attached map for an overview of where baiting will occur and for more detail refer to:

- <https://agriculture.vic.gov.au/livestock-and-animals/livestock-health-and-welfare/livestock-predation-management/livestock-predation-management-in-eastern-victoria/baiting-notifications> or <https://go.vic.gov.au/4dj5rCL>
- Alternatively scan the QR code with a device



The use of the 1080 pest animal bait product will follow the product label and the Directions for the Use of 1080 and PAPP Pest Animal Bait Products in Victoria (DFU). When used following the product label and the DFU the chances of non-target animal impacts are reduced but there is still some risk.

### Risk to your Animals

To minimise the risk of poisoning to your animals you are advised:

1. Domestic animals, particularly dogs and cats, are susceptible to primary poisoning from ingesting 1080 pest animal bait products and secondary poisoning from ingesting contaminated carcasses.
  - a. Confine, muzzle and/or restrain your domestic animals, particularly dogs and cats, to prevent them from accessing 1080 pest animal poison baits or carcasses.
  - b. Closely watch the health and behaviour of your companion animals or livestock. If you notice any unusual or uncharacteristic behaviour, contact your local veterinarian at once.
2. There is a delay in the poison action of 1080 and animals that have ingested 1080 pest animal bait products may die on your property.
  - a. Collect and destroy any poisoned carcasses you find by burning (following local regulations) or burying to a depth of at least 50 cm for rabbits and at least 1 metre for foxes, wild dogs and feral pigs.
  - b. Always dispose of carcasses away from natural features such as waterways.

### Risk to Humans

Compound 1080 (sodium fluoroacetate) is a restricted schedule 7 poison and there is no known antidote. If you are handling poison bait and/or carcasses always use protective rubber gloves and wash hands and gloves thoroughly after contact.

**If poisoning occurs immediately contact a doctor or the Poisons Information Centre on 13 11 26.**

For further information please contact:

#### Gippsland Region

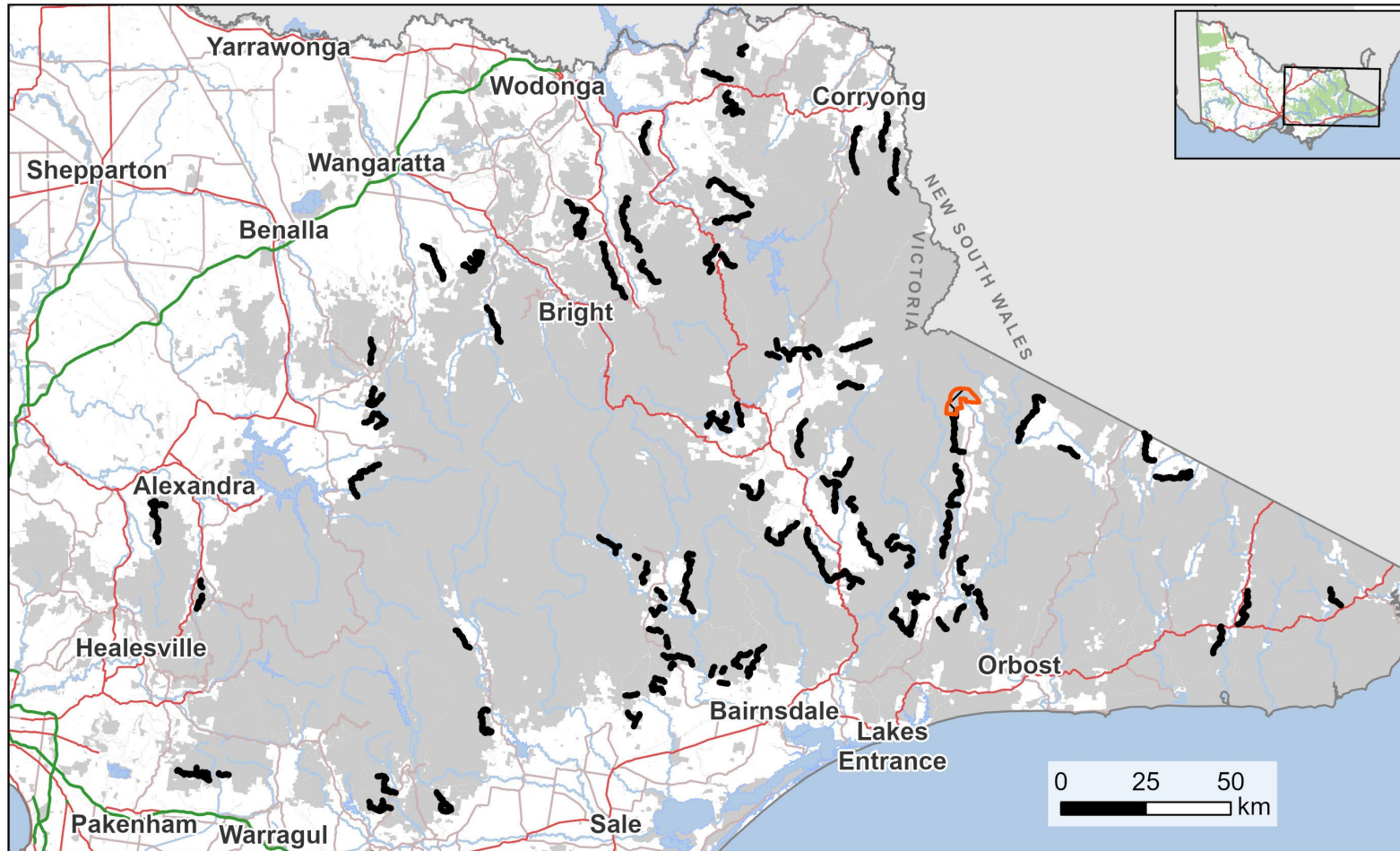
Wayne Peters  
Gippsland Operations Manager  
Vertebrate Species Management Program  
Telephone: 0429 401 217





#### Hume Region

Craig Hamilton  
Hume Operations Manager  
Vertebrate Species Management Program  
Telephone: 0429 969 413

# DEECA Vertebrate Species Management Program - 1080 Pest Animal Baiting

## Ground Baiting: From 1 July 2025 to 1 January 2026




-  1080 Ground Baiting Transect
-  Off Track Trapping Area
- Public Land**
-  Public Land
-  Water Body


For more detail refer to:


- <https://agriculture.vic.gov.au/livestock-and-animals/livestock-health-and-welfare/livestock-predation-management/livestock-predation-management-in-eastern-victoria/baiting-notifications>
- Or <https://go.vic.gov.au/4dj5rCL>
- Or scan the QR code



Author: pm2l Produced: Wednesday, 11 June 2025 8:34:42 AM Spatial Reference: Name: GDA2020 MGA Zone 55, Datum: GDA2020, Projection: Transverse Mercator

 **Copyright:** © The State of Victoria Department of Energy, Environment and Climate Action, 2025. This work is licensed under a Creative Commons Attribution 4.0 International licence. For further information in relation to the Department's copyright and creative commons refer to [www.deeca.vic.gov.au/copyright](http://www.deeca.vic.gov.au/copyright).

 **Accessibility:** If you would like to receive this publication in an alternative format, please contact our Customer Service Centre on 136 186 or email [customer.service@deeca.vic.gov.au](mailto:customer.service@deeca.vic.gov.au). Alternatively contact the National Relay Service on 133 677 or [www.relayservice.com.au](http://www.relayservice.com.au).

 **Disclaimer:** This publication may be of assistance to you but the State of Victoria and its employees do not guarantee that the publication is without flaw of any kind or is wholly appropriate for your particular purposes and therefore disclaims all liability for any error, loss or other consequence which may arise from you relying on any information in this publication. For further information refer to [www.deeca.vic.gov.au/disclaimer](http://www.deeca.vic.gov.au/disclaimer).



We acknowledge and respect Victorian Traditional Owners as the original custodians of Victoria's land and waters, their unique ability to care for Country and deep spiritual connection to it. We honour Elders past and present whose knowledge and wisdom has ensured the continuation of culture and traditional practices.